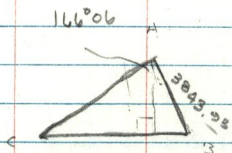


$179^{\circ} 60'$        $13^{\circ} 54'$   
 $\hline 166^{\circ} 06'$

SEPT ————— FACE WEST



12 51  
 N 2° 11' W

0	20 42
10 40	10 40
10 10 02	79 01
79 09 2	

NAIL IN NAIL  
 WAY OVER HIS  
 FACE WEST